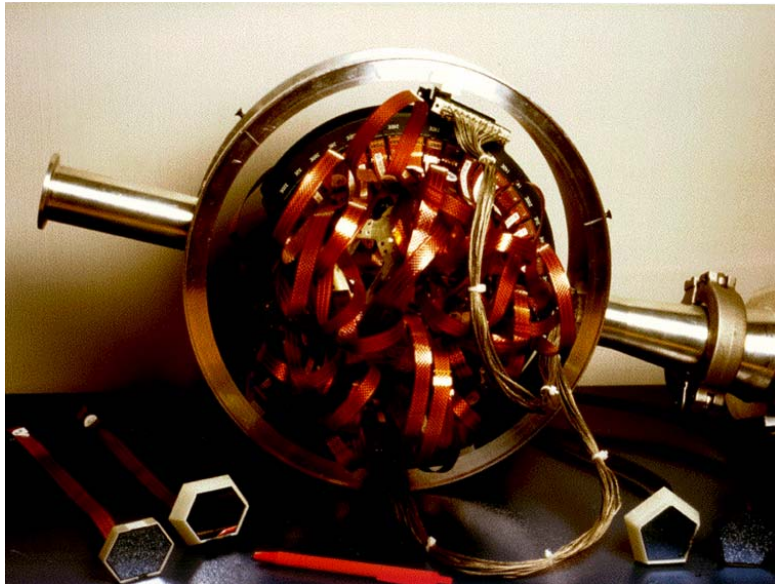
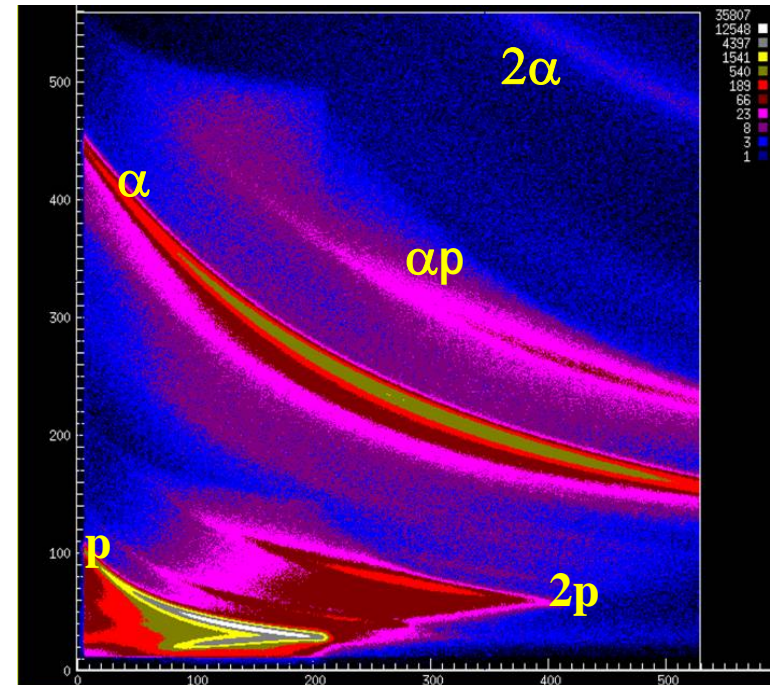


Ancillary Detectors - ISIS

40 Si E- ΔE telescopes



ΔE



E

■ 40 E- ΔE Si telescopes

■ $\Delta E \sim 130 \mu\text{m} \sim 71\%$

■ $E \sim 1000 \mu\text{m} \sim 65\%$

■ Only Configuration I

■ Total efficiency

■ $\epsilon_{\text{proton}} \sim 60\%$

■ $\epsilon_{\text{alpha}} \sim 35\%$

E. Farnea